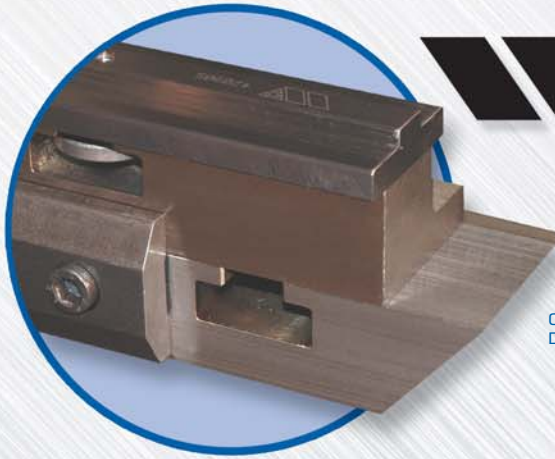
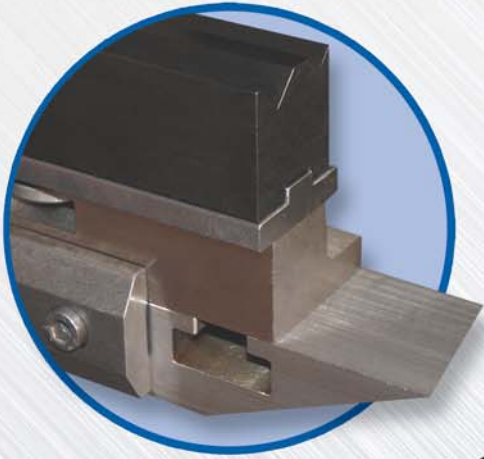


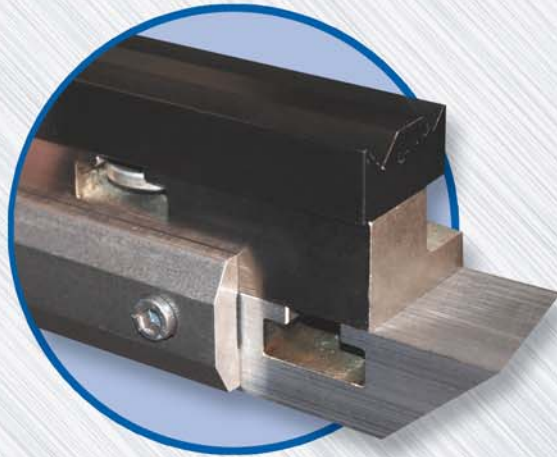
QUICK CHANGE 2V DIE  
"ONLY ONE SET-UP REQUIRED"



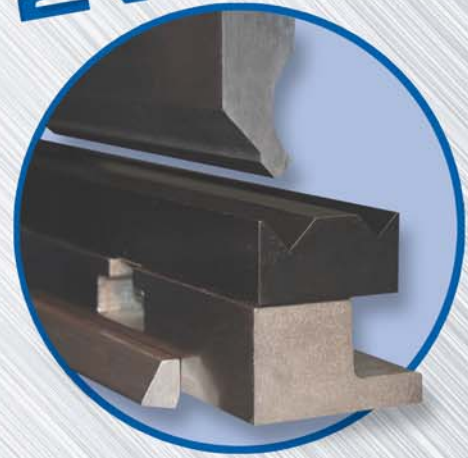
QUICK CHANGE  
DIE RAIL



# THE FASTEST SET-UP WITH THE . . . QUICK CHANGE 2V DIES



OLD STYLE 2V DIE



OLD STYLE 2V DIE  
"REQUIRES SET-UP EVERYTIME AND  
A HIGHER POSSIBILITY OF ERROR"

## LEAN MANUFACTURING WITH THE QUICK CHANGE 2V DIES

Successful sheet metal companies will all have something in common... They all continually look for ways to cut costs and maximise profits.

To achieve this Wilson Tool supplies a quick change 2V die system, with the key ingredient of accuracy and long life. The successful quick change is due to the die rail in the 2V Die system, this rail is consistently having dies slid along it and if it is made from the wrong material, or the heat treatment is not correct then errors will build up in the system. At Wilson Tool, along with top quality dies, the die rail will resist this wear better than any other.

The past system where the die has to be shimmed back to front then set-up correctly each time meant vital production time and your competitive advantage lost, Wilson Tool have illuminated this with the 2V Dies.

With the Wilson Tool quick change die system once it is set the die is in the right place every time. Why be good when you can be the best with the Wilson Tool Quick Change 2V Dies.

Lean Manufacturing is becoming increasingly important to businesses operating in today's harsh economic environment. The technologies of Lean Manufacturing allow companies to eliminate waste and improve quality; reducing costs and improving value to the customer. In a competitive environment in which several companies manufacture similar products, only the most efficient organisations, those adopting Lean Manufacturing, will succeed at the expense of their competition.

The Quick Change 2V Dies is a great example of Wilson Tool's commitment to Lean Manufacturing, reducing the waste in sheet metal organisations. The tool reduces set up times considerably when compared with the conventional methods because once it is set it is in the right place every time. With accuracy and long life the tools span of life will be much longer than normal 2V Dies.

See how our tools can help your organisation with Lean Manufacturing, please contact the Wilson Tool sales desk or your local Wilson Tool sales engineer.

Wilson Tool International Ltd. Stirling Road,  
South Marston Industrial Estate, Swindon, Wiltshire SN3 4TQ  
Free phone: 0800 373748 Tel: +44 (0) 1793 831818 Tel free: 1-800 70 90 09 Ireland  
Free fax: 0800 373758 Fax: +44 (0) 1793 831945 Fax free: 1-800 53 55 38 Ireland

[www.wilsontool.com](http://www.wilsontool.com) [sales@wilsontool.eu.com](mailto:sales@wilsontool.eu.com)

PB100

